





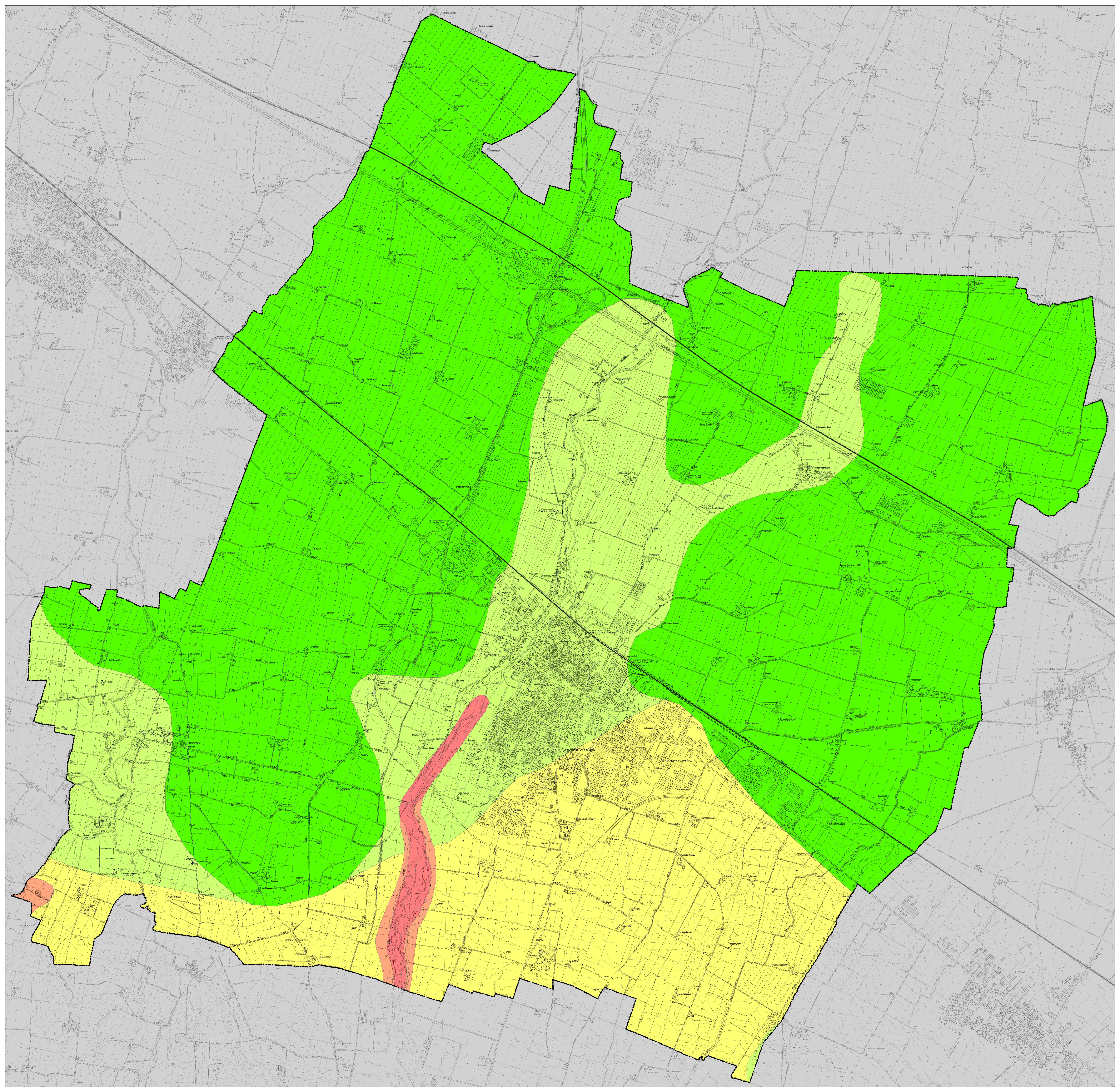



**Legenda**

-  Confine comunale
- Classe di vulnerabilità degli acquiferi**
-  Estremamente elevata
-  Elevata
-  Alta
-  Media
-  Bassa

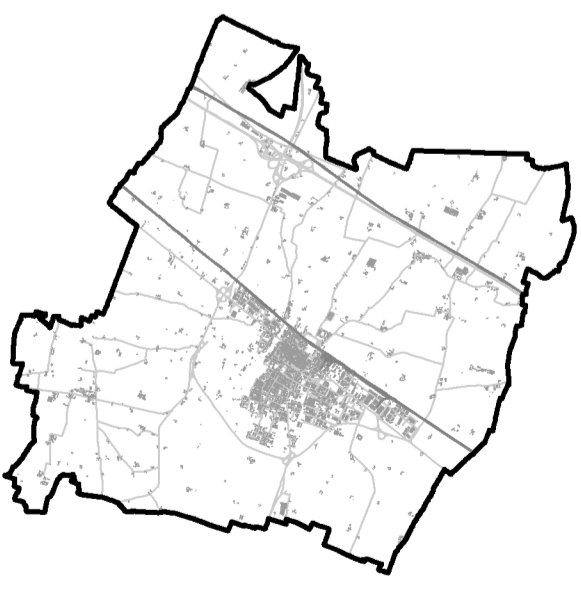


 Comune di Fiorenzuola d'Arda

**P.U.G.**  
Piano Urbanistico Generale

**QUADRO CONOSCITIVO  
DIAGNOSTICO**

SF4 - SICUREZZA TERRITORIALE



**QC\_SF4.5**

Carta vulnerabilità degli acquiferi

Scala 1:50.000

<b>Sindaco</b> Raffaele Gandolfi	<b>Progettisti incaricati</b> arch. Elena Trenti arch. Fabio Cusi arch. Luca Pellegrini geol. Gabriele Corbelli arch. Denis Alibardi
<b>Assessore urbanistica</b> Franco Brunner	
<b>Ufficio di Piano</b> arch. Elena Trenti (responsabile del procedimento) arch. Valterio Zucconi (direttore della comunicazione e della partecipazione) geol. Lorenza Giannardi geol. Asaferio Spagnoli dott.ssa Marlene Calini	